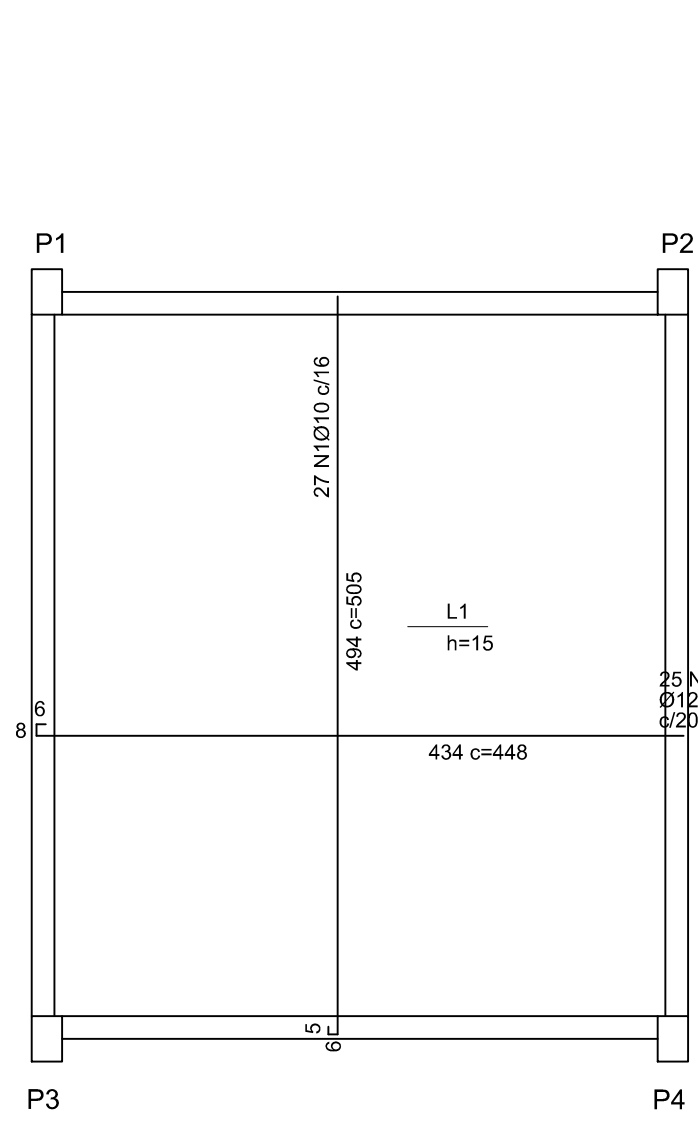
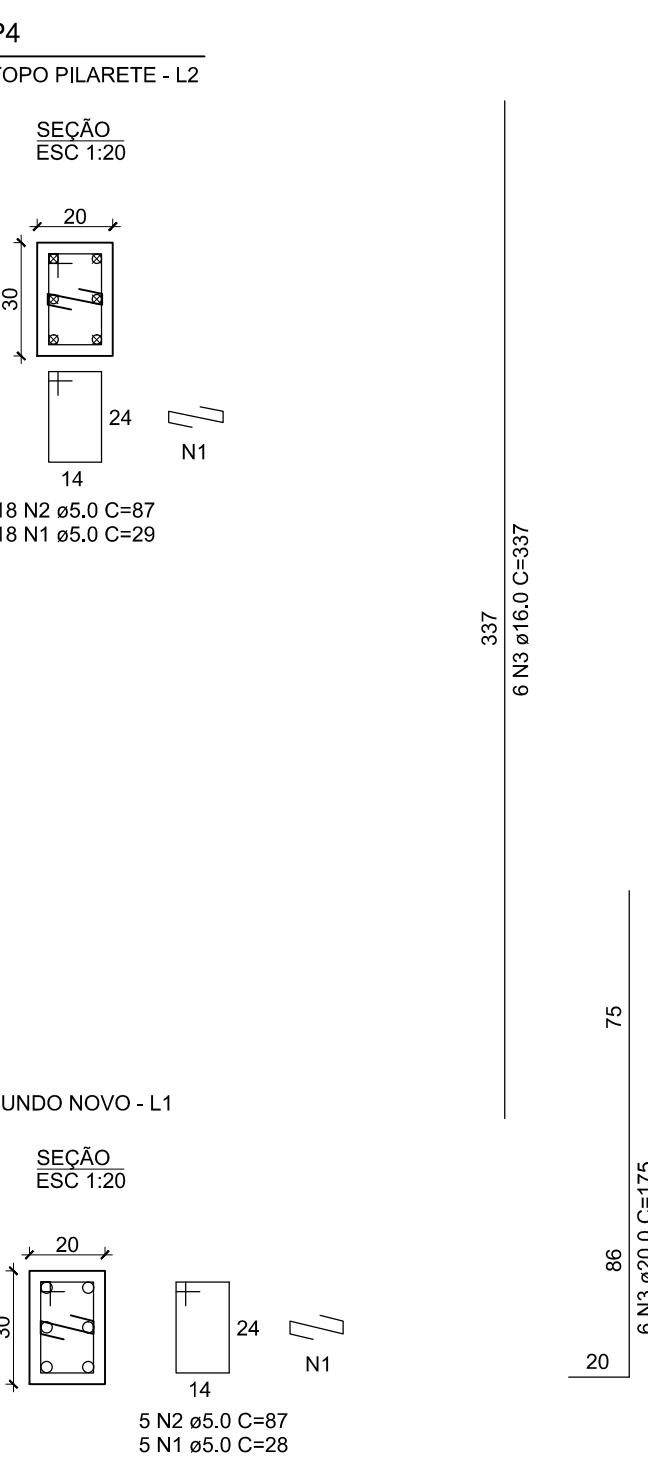
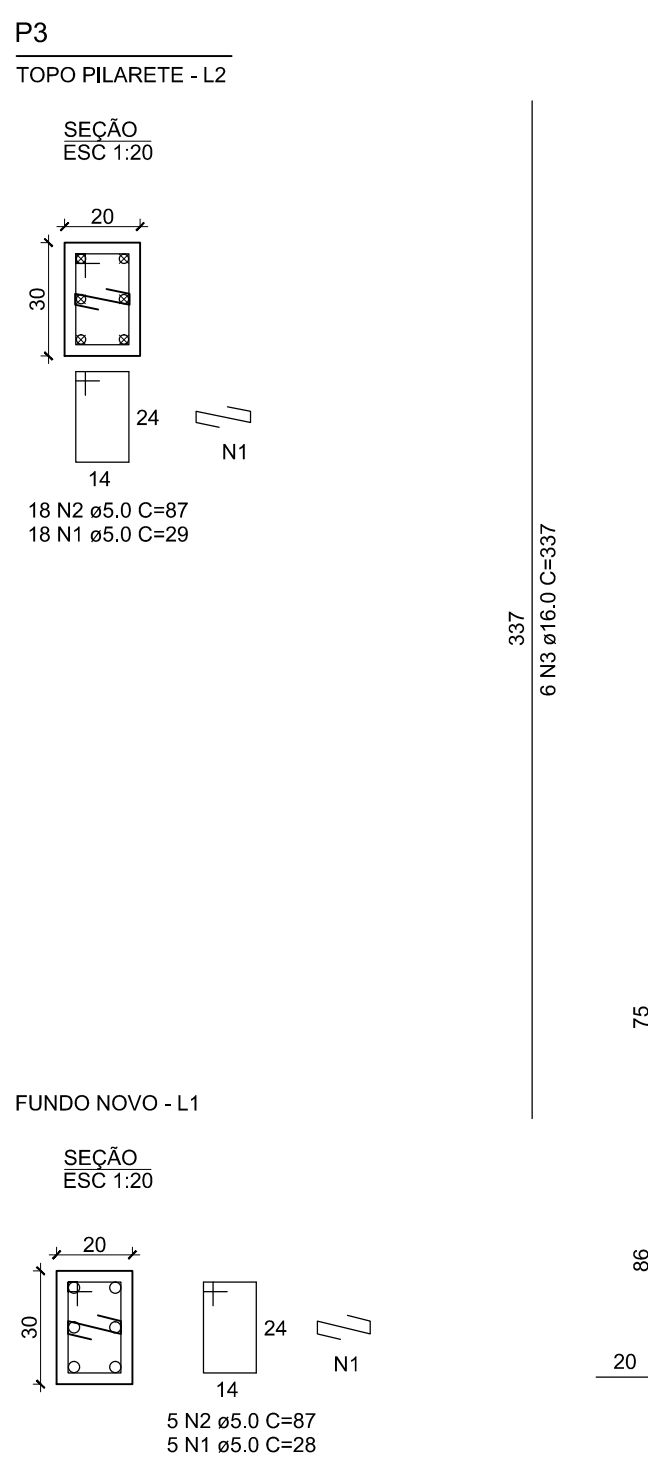
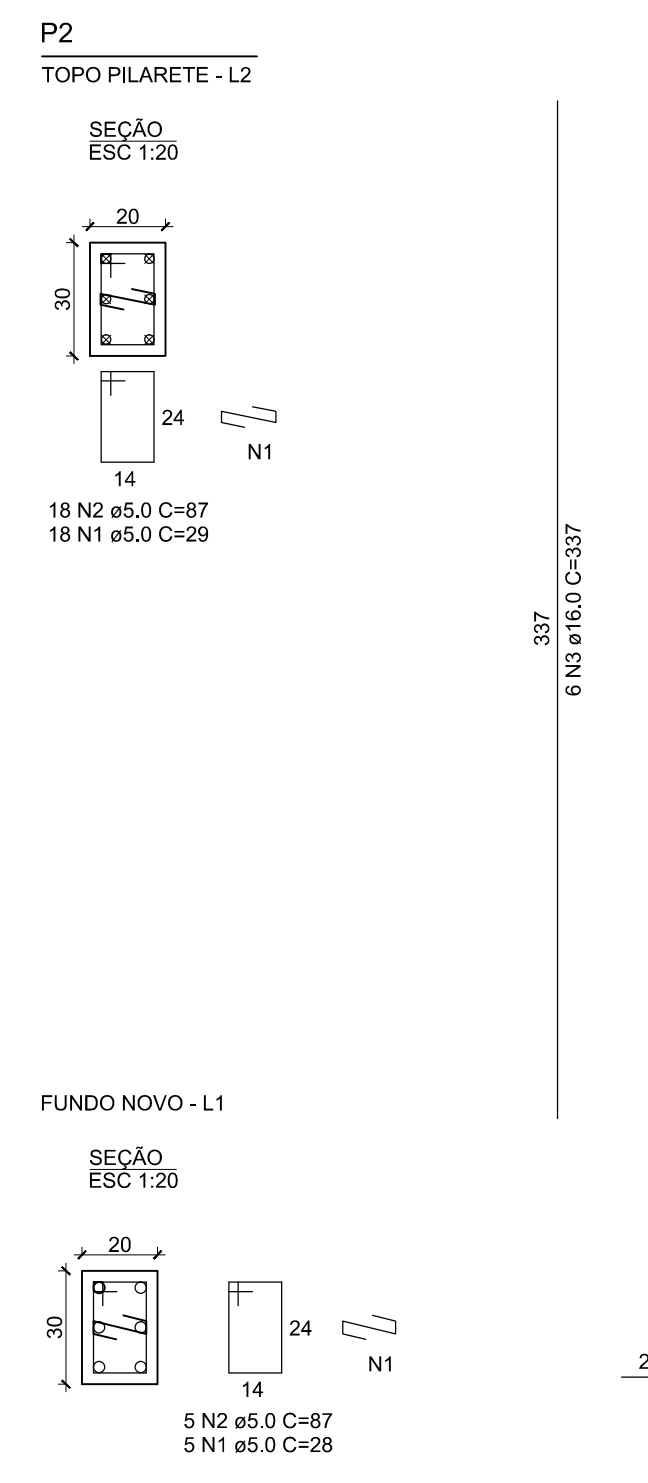
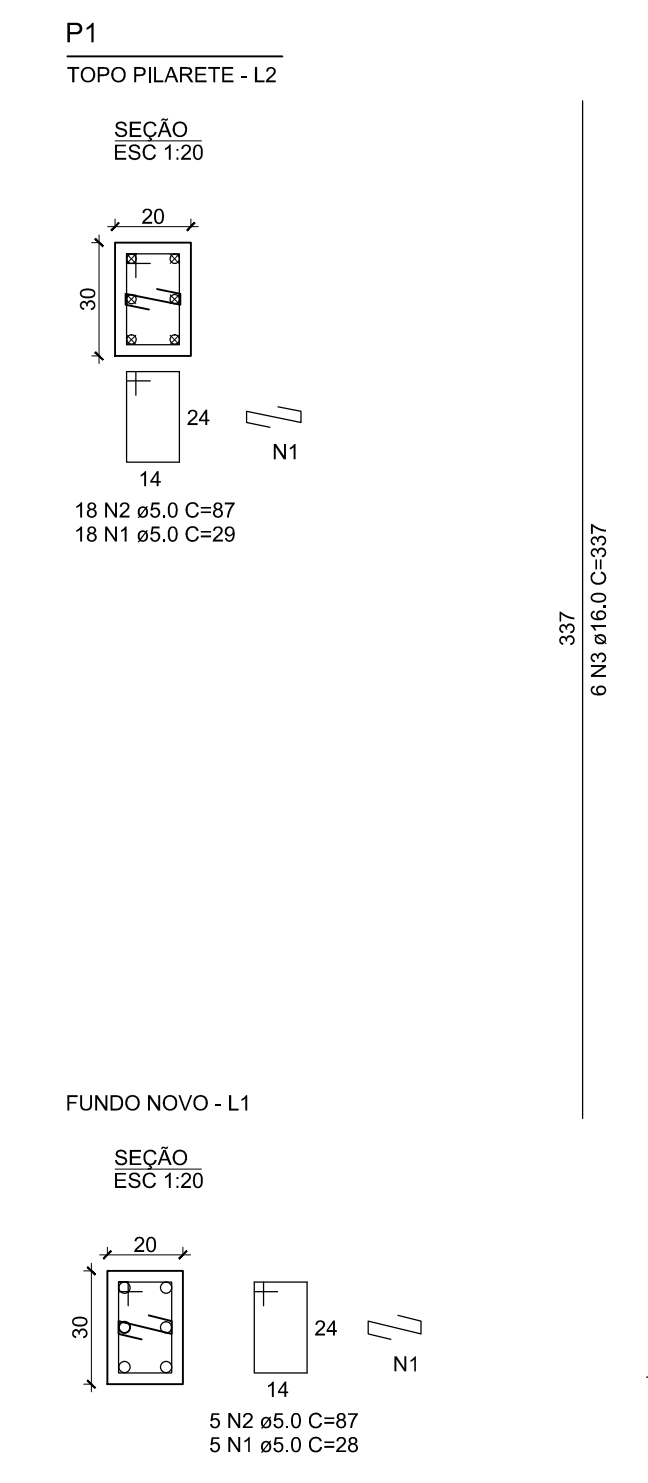


ELEMENTO	AÇO	POSICÃO	DIÂMETRO	COMPRIMENTO	QUANTIDADE	VIGAS E LAJE		PESO CA60 (5.0)-0.15 kg/m	PESO CA50(6.3)-0.24 5kg/m	PESO CA50(8.0)-0.195kg/m	PESO CA50(10.0)-0.217kg/m	PESO CA50(12.5)-0.245kg/m	PESO CA50(16.0)-1.572kg/m	
						COMPRIMENTO TOTAL	NR BARRAS							
VIGA 1	CA 50	N6	16	5.27	2	10.54	0.878							
	CA 50	N5	16	5.27	1	5.27	0.439							
	CA 50	N3	16	4.58	1	4.58	0.362							
	CA 50	N2	6.3	0.86	2	1.72	0.143		0.42	1.81				
	CA 50	N4	10	4.58	3	13.74	1.145				8.48			
VIGA 2	CA 60	N1	5	0.97	22	21.34	1.778							
	CA 50	N6	16	5.31	2	10.62	0.885							
	CA 50	N5	16	5.31	1	5.31	0.443							
	CA 50	N3	16	4.58	1	4.58	0.362							
	CA 50	N2	6.3	0.86	4	3.44	0.287		0.84	2.88				
VIGA 3	CA 50	N4	10	4.58	3	13.74	1.145				8.48			
	CA 60	N1	5	0.97	22	21.34	1.778							
	CA 50	N4	16	5.36	2	10.72	0.900							
	CA 50	N3	16	5.36	1	5.36	0.430							
	CA 50	N2	16	5.62	2	11.24	0.937							
VIGA 4	CA 60	N1	5	0.97	26	25.22	2.102		3.78					
	CA 50	N4	16	6.28	2	12.56	1.047							
	CA 50	N3	16	6.28	1	6.28	0.523							
	CA 50	N2	16	5.62	2	11.24	0.937							
	CA 60	N1	5	0.97	26	25.22	2.102		3.78					
VIGA 101	CA 50	N4	8	4.95	2	9.90	0.808			3.83				
	CA 50	N3	8	1.11	1	1.11	0.093			0.44				
	CA 50	N2	8	4.54	2	9.08	0.757			3.59				
	CA 60	N1	10	0.97	22	21.34	1.778		3.20					
	CA 50	N3	10	4.86	2	9.72	0.810				6.00			
VIGA 102	CA 50	N2	8	4.54	2	9.08	0.757			3.59				
	CA 60	N1	8	5.87	22	21.34	1.778		3.20					
	CA 50	N3	8	5.69	2	11.38	0.948			4.50				
	CA 50	N2	8	5.24	2	10.48	0.873			4.14				
	CA 60	N1	10	0.97	26	25.22	2.102		3.78					
VIGA 103	CA 50	N3	10	5.17	2	10.34	0.852			4.56				
	CA 50	N2	8	5.24	2	10.48	0.873			4.14				
	CA 60	N1	10	0.97	26	25.22	2.102		3.78					
	CA 50	N1	10	5.05	27	136.35	11.363					84.13		
	CA 50	N2	12.5	4.48	25	112	9.333						145.46	
TOTAIS DE PESO POR DIÂMETRO:								27.94	3.26	30.58	109.91	107.86	145.46	
LAJE INF.	CA 60		6.3	137.87		137.87				33.09				
	CA 60		6.3	137.87		137.87				33.09				

ELEMENTO	AÇO	POSICÃO	DIÂMETRO	COMPRIMENTO	QUANTIDADE	PILARES		PESO CA60 (5.0)-0.15 kg/m	PESO CA50(16.0)-1.572kg/m	PESO CA50(20.0)-2.466kg/m		
						COMPRIMENTO TOTAL	NR BARRAS					
P1-L2	CA 60	N1	5	0.29	18	5.22	0.435					
	CA 60	N2	5	0.87	18	15.66	1.305	2.35				
P1-L1	CA 50	N3	16	3.37	6	20.22	1.685			31.91		
	CA 60	N2	5	0.28	5	1.4	0.117	0.21				
P2-L2	CA 60	N1	5	0.87	5	4.35	0.363	0.65		25.88		
	CA 50	N3	16	1.75	6	10.5	0.875					
P2-L1	CA 50	N1	5	0.29	18	5.22	0.435			0.70		
	CA 60	N2	5	0.87	18	15.66	1.305	2.35				
P3-L2	CA 50	N3	16	3.37	6	20.22	1.685			31.91		
	CA 50	N1	5	0.28	5	1.4	0.117	0.21				
P3-L1	CA 50	N2	5	0.87	5	4.35	0.363	0.65		0.70		
	CA 60	N3	16	1.75	6	10.5	0.875			25.88		
P4-L2	CA 50	N1	5	0.39	18	7.02	0.585	1.06				
	CA 50	N2	5	0.87	18	15.66	1.305	2.35				
P4-L1	CA 60	N3	16	3.37	6	20.22	1.685			31.91		
	CA 50	N1	5	0.28	5	1.4	0.117	0.21				
P4-L1	CA 50	N2	5	0.87	5	4.35	0.363	0.65		0.70		
	CA 60	N3	16	1.75	6	10.5	0.875			25.88		
TOTAIS DE PESO POR DIÂMETRO:								16.25	127.63	26.97		
VOLUME DE CONCRETO E FORMAS PARA VIGAS												
VIGA	LARGURA	ALTURA	EXTENSÃO	VOLUME	FORMAS							
V1	0.15	0.40	4.00	0.24	3.80							
V2	0.15	0.40	4.00	0.24	3.80							
V3	0.15	0.40	4.70	0.282	4.47							
V4	0.15	0.40	4.70	0.282	4.47							
V101	0.15	0.40	4.00	0.24	3.80							
V102	0.15	0.40	4.00	0.24	3.80							
V103	0.15	0.40	4.70	0.282	4.47							
V104	0.15	0.40	4.70	0.282	4.47							
				2.686	33.8							



ARMAÇÃO POSITIVA DA LAJE L1
ESC: 1/50



PREFEITURA DE CÂNOAS

EMEF RIO GRANDE DO SUL
Rua Wenceslau Brás, 35 - Bairro Mato Grande

PROJETO: Indicada
CONTEÚDO: John
RESPONSÁVEL TÉCNICO: Silvia Regina Brier | CRE: 50.270

DATA: Out/2020
ESCALA: Indicada
DESENHO: John
FRANCHA: 02/02